

TPCA Show —TAIPEI—

第27屆

2026

application form

NEW

先進封裝
特別展

Advance
Packaging

台灣綠色科技
國際展覽會
GREEN TECH

台灣電子組裝/
SMT國際展覽會
SMT

台灣電路板產業
國際展覽會
PCB

台灣電子構裝
國際展覽會
IC PACKAGING

台灣熱管理技術
國際展覽會
THERMAL

2026.10.20_{Tue.} ▶ **22**_{Thu.}

台北南港展覽館1館・TaiNEX 1



Scan me

Make Booth Reservation

INFORMATION

Organizer

Taiwan Printed Circuit Association (TPCA)

Show Days

Move-In: October 18 (Sun.), 2026

October 19 (Mon.), 2026

Show Days: October 20 (Tue.), 2026

October 21 (Wed.), 2026

October 22 (Thu.), 2026

Move-Out: October 23 (Fri.), 2026

Venue

Taipei Nangang Exhibition Center, Hall 1 (TaiNEX 1)



1. Admission

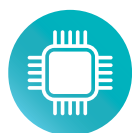
1. Professional visitors from all relevant sectors such as PCB, electronic assembly, thermal management, green technology, laser technology, packaging, surface finishing, AOI testing and intelligent automation are admitted free of charge by business cards.
2. Children under 18 will not be admitted.

2. Main Exhibits



PCB Expo
Taiwan

- 1.PCB Manufacturing: manufacture of single-layer PCB, double-layer PCB, multi-layer PCB,HDI ,IC Substrate, more...
- 2.PCB Testing Equipment: AOI testing equipment, non-destructive testing equipment, measuring equipment and more...
- 3.PCB Raw Materials and Chemicals: CCL, copper electroplating liquid, etching liquid and more...
- 4.PCB Dry and Wet Process Equipment: drilling machine, exposure unit, loader / unloader, electroplating line equipment and more...



EAssembly
Expo Taiwan

- 1.SMT equipment, materials, chemicals, consumptives.
- 2.SMT testing and inspection equipment, insert component assembly equipment and materials.
- 3.Semiconductor production equipment and materials, FPD production equipment and materials and more... .



Green Tech
Expo Taiwan

- 1.Environmental Equipment and Material Manufacturing Industries.
- 2.Recycled Product Manufacturing Industries: recycled product manufacturing industry, Eco-friendly product manufacturing industry.
- 3.Environmental Technology Service Industries: environmental technology consulting industry, environmental engineering industry, environmental management technology.



Thermal
Management
Expo Taiwan

- 1.Thermal-module-related : thermal modules, heat pipes, fans, vapor chambers, heat sinks, thermal interface materials (TIM) ,thermal.
- 2.Conductive substrate, thermoelectric coolers, thermal conductive powder, liquid cooling, micro motors, nanometer heat radiation coating, raw materials... .
- 3.Thermal Measurement and Modeling: thermal-measurement-related equipment, thermal design and analysis software... .



Packaging
Expo Taiwan

Resin, Lead frame, Electronic conductive, gold wire / Bonding Wire, Auto Molding Equipment, Trim & Form Equipment, Package Sawing Equipment, Flip Chip, COFA.



Advance
Packaging
Pavillion

NEW

TGV, Glass Core, CoWos, CoPos, CoWop, FoPLP,...

3. Booth Fees

Each booth is 3m x 3m (9m²) raw space, any decoration layouts and electricity are not included.

NT/ Excluded VAT	Special Price 2025.10.22-24	Original Price After 2025.10.25
TPCA Member	53,400	55,650
Member of WECC Association	66,780	69,560
Non-TPCA Member	80,140	83,480

Non-TPCA members and SMT/Electronic Assembly companies can apply for membership at the same time; After the membership application is approved that it can have TPCA membership price.

- a. The "Special price" is only applicable from October 22 to 24, 2025.
- b. Exhibitors who are for "Special price" that must pay 40% deposit before December 31, 2025 and complete the 60% balance payment before April 30, 2026.
- c. Starting from October 25, 2025, if the number of booths is added, deleted or canceled, it will be regarded as a breach of contract, and the final booth price will be calculated at the original price.
- d. Exhibitors must have TPCA membership from 2025.10.25 to 2026.12.31 in order to enjoy the TPCA member price for the extension period. Please contact TPCA for membership application.

4. Booth Facility

- 1.The booth fee only contains raw space, any decoration layouts and electricity are not included.
- 2.Exhibitors are responsible for water, air and electricity supply application specified on exhibitor manual.
- 3.In response to environmental protection, we encourage exhibitors to go green and use sustainable materials on exhibit designs.

5. Registration

- 1.Scan QRCODE to make TPCA Show 2026 Booth Reservation.
- 2.Please register online and complete the registration form.
- 3.Deadline : Until booths run out.



[Scan me](#)

[Make Booth Reservation](#)

6. Payment Information

1. Bank Transfer (please indicate " TPCAShow 2026 ")

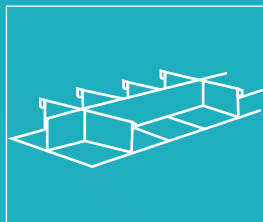
Payee: Taiwan Printed Circuit Association

Bank Name: Land Bank of Taiwan, North Taoyuan Branch No. 1071 Chung Cheng Rd., Taoyuan City, Taiwan

SWIFT Code: LBOTTWTP131

Account No.: 131001000699

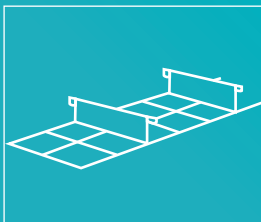
7. Booth Type



Line Type

Number of booths: 1,2,3

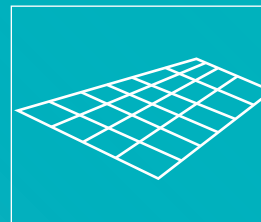
Minimum aisle-facing sides: 1



Block Type

Number of booths: 4,6,8,10,12,14

Minimum aisle-facing side: 2



Island Type

Number of booths: 16 or more...

Minimum aisle-facing side: 3

8. Booth Allocation

Allocation Order	<ol style="list-style-type: none">1.Larger booth (Over 16 booths) selects first.2.For same booth size, Exhibitor with higher priority number selects first.3.For same priority numbers, the selection order will be determined by a draw.
Selection Sequence (Priority Number)	<p>Priority number = (1)+(2)+(3)</p> <p>(1) Rented TPCA Show TAIPEI 2026, 2025, 2024</p> <p>(2) Exhibitors who have participated since 2000 .</p> <p>(3) 2025 Green Decoration Award Winners</p>
Booth Layout Determination	<ol style="list-style-type: none">1. The booth space layouts are determined by the Organizer prior to booth allocation.2. TPCA reserves the final decision to any booth allocations to any exhibitors.
Notices	<ol style="list-style-type: none">1. Booth fees must be fully paid before the booth allocation process for any booth size, any registration date and any priority number.2. Booths selected for a single exhibitor must be adjacent to each other and not cover parts of the aisles

9. Groups Exhibitors

A. Special Event Joint Exhibition

1. To participate in the exhibition, “TPCA Show committee” encourages proposals that are satisfactory to the content of “smart circuit board manufacturing resolutions” or themes as required by the industrial trend. For example: Robotic arm and machinery coworking, smart image detection, equipment communication interface integration, smart transportation and storage, equipment status monitoring, etc. Please refer to the smart manufacturing development blueprint on the right.
2. The participants will be eligible for attending the exhibition after the proposal of the joint exhibition is submitted with the note given during registration and upon approval by the TPCA Show Committee (written review and presentation).
3. TPCA may conduct the project promotion for the booth, exhibitor, and the participant's theme, as approved by the Expert Committee.
4. The participant, as approved by “TPCA Show committee”, will not be subject to the number of booths that they receive and will be exempted from the fee for joint exhibitions.
5. For detailed information, please refer to the enforcement rules and regulations for smart manufacturing thematic exhibitions.

B. General Exhibition

1. The participants join the exhibition due to the products in common and supplementary to each other. The content of the exhibition only covers the cooperation and incorporation of products and not thematic exhibition projects.
2. Application Threshold
 - Two participants: a booking for at least 12 booths.
 - Three participants: a booking for at least 20 booths.
 - Five participants: a booking for at least 36 booths.
3. Each participant will be charged an additional fee of NT\$10,000 for propaganda
4. Joint participants must provide an individual application and will not be eligible to participate in the exhibition until they are approved by the joint review from the “TPCA Show Committee”.

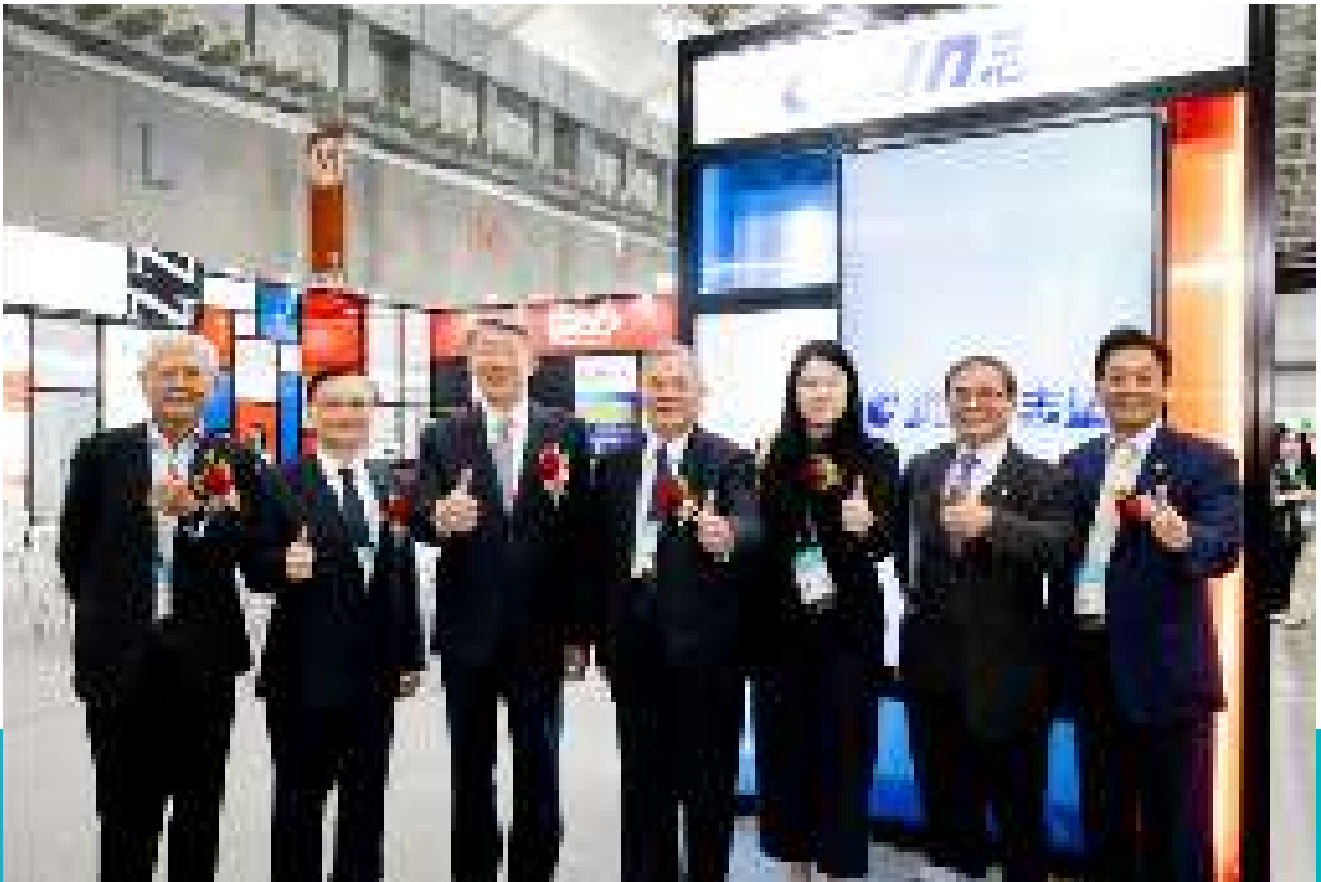
C. Booth Selection

1. Thematic Project Groups Exhibition: TPCA will arrange the exhibition area.
2. General Groups Exhibition
3. Individual participants are prior to selecting booths; joint participants then select the remaining booths in the order of priority number.
4. Joint participants select booths based on Rule 1, regardless the number of booths entitled by individual participants.
 - Scenario 1 (16 Booth or any Island Booth) : An 20-booth individual participant still selects the booth ahead of an 32-booth joint participant.
 - Scenario 2 (15 or less Booth) : With 12-booth for 4 participants, including 2 individual participants and 2 joint participants: the 2 individual participants select the booths first by the selection order, followed by the 2 joints participants select the remaining booths by the selection order.
 - Joint exhibition decorations cannot be separated and must be designed as a whole. (Separately dividing the usable area within the booth or using walls to separate usable areas will be considered a violation of regulations, and the organizer may request revisions.)
 - For other joint exhibition and decoration regulations, please refer to the exhibitor manual.

D. Booth Decoration

1. Joint exhibition decorations cannot be separated and must be designed as a whole. (Separately dividing the usable area within the booth or using walls to separate usable areas will be considered a violation of regulations, and the organizer may request revisions.)
2. For other joint exhibition and decoration regulations, please refer to the exhibitor manual.

E. TPCA is entitled to accept or reject applications that cover other kinds of exhibitions mentioned above.



10. Cancellation

1. Cancellation on or before May 30, 2026 : 70% refund of booth fees
2. Cancellation from July 1 to June 30, 2026: 30% refund of booth fees
3. Cancellation on or after July 1, 2026: no refund

* Booths finalized after allocation cannot be refunded.

11. Schedule (Subject to Change)

~2026.4.30 Call for Registration 、 Payment Processing

2026.3.27 Joint Exhibitors Proposal Submission

2026.5.29 Joint Exhibition Proposal Submission Processing by “ TPCA Show Committee ”

2026.9.18 Summit Exhibitor Manual Application Form

2026.10.18-19 Exhibits Move-in

2026.10.20-22 show days

2026.10.23 Exhibits Move-Out

12. Promotion Program (Paid Services)

1. Tech x Total Solution (NT 5,250 / session)

TPCA Show provides a room and facility for exhibitors to hold presentations of their new products and technologies to the professional visitors.

The Organizer will promote NPI sessions before and during the Show to strengthen the exhibitors' exposure and brand identity.

2. Advertisement on PCB Shop

PCB Shop is the PCB industry sourcing publication with the largest circulation in the Greater China region. Full color pages with easy-to-navigate indices, it is the best choice for all-year-round global promotion.

3. Show Advertisement Sponsorship

TPCA is offering sponsored spaces at various indoor and outdoor spots during the Show to maximize your marketing potentials.

13. Security Issues

1. During the Show (including Move-in and Move-out) , TPCA will have entry and exit controls at the show ground. However, exhibitors should assign staff to take care of their own exhibits and booth materials, and should hire security guards for valuable goods.

2. TPCA is not responsible for any losses or damages.

Exhibitors should purchase fire, threat, water and other applicable insurances (including natural disasters insurance) for their exhibits or booth materials throughout the Show. TPCA will not take financial responsibilities for exhibits or booth materials lost or damaged during the Show.

3. In the event that exhibits and other booth materials causes injury or death to any person during the Show (including move-in and dismantling) due to erroneous operation, maintenance or directions, the Exhibitor causing the casualty shall take full financial and legal responsibilities.

14. Cancellation of Event

If the show is cancelled due to unforeseen reasons such as earthquakes, typhoons, epidemics, fire or flood, TPCA corresponding actions will be decided by “ TPCA Show Committee ”.

15. Contact

Ms. Lynn , Mr. Bernard
TEL: Tel: +886-3-3815659 ext.302,303
Fax: +886-3-3815150
Email: show@tpca.org.tw

TPCA reserves the right to amend, define and explain any of the terms listed in this document.

